



Manufacturing Technology L.L.C.



V4.0

IRIS IN BRIEF..

IRIS VISION

Jordan Leader in Precise Design and Reliable Manufacturing of Machines, Spare parts, Molds and Dies.

IRIS MISSION

- ✓ To contribute to the Jordanian Economy through providing environmentally responsible solutions towards building local factories and machines as well as providing fast responses of a wide range of spare parts to cut down shutdown time of industrial facilities.
- ✓ To bridge the gap between practical engineering applications and academic research and development.
- ✓ To develop new products with added value for the international market such as Smart Couplings.
- ✓ To interact and serve International Pronounced Manufacturers (OEM's) and attract them towards the Jordanian Industrial Market.

IRIS OBJECTIVES

- ✓ Support the industrial sector in Jordan with new products and innovative solutions.
- ✓ Nationalize the knowhow, and improve confidence in our local people in the area of product development, design and manufacturing.
- ✓ Bridge the locals to international progress in industrial fields.
- ✓ To grow its business and to sustain development.
- ✓ To serve local power, refining, processing, cement, and metal works etc. industries in the fields of reverse engineering and manufacturing of reliable solutions.
- ✓ To serve local plastics and metal forming industries by providing high quality, precise and reliable Molding Solutions.
- ✓ To support starting industries by providing custom design, manufacturing and fabrication of production lines and machinery.

IRIS IN BRIEF..

IRIS Manufacturing Technology, specialized in Mechanical Systems; development, design and manufacturing including:

- ✓ Hydraulic and Pneumatic Systems: Hydraulic pumps, valves and cylinders.
- ✓ Mechanical Transmission Systems such as Gear couplings, flexible couplings and Cardin Shafts.
- ✓ Gearboxes of different kinds including: spur, helical and worm gear elements.
- ✓ Molds and Dies for plastic and metal industries.

- ✓ Hydraulic machines: presses up to 500 Tons, shear machines, sheet metal cutting and bending machines.
- ✓ Spare parts for different applications including: Locomotives, truck, excavators and loaders.
- ✓ Repair services for rotating machines including compressors, pumps and electrical machines.
- ✓ Field services on vibration measurement diagnostics, dynamic balancing and laser alignment.



IRIS WORK LINE

Design & Engineering

Machines & Components

Mold & Die Making

Field Services

Gears & Couplings

LED Light Products

Spare Parts

Poly Carbonate Enclosures

Powder Coating Services

Laser Alignment

Stainless Steel Fabrication

Material Testing

Plastic Injection Products

Repair & Maintenance Pumps

Aluminum H.P. Injection Products

Re-conditioning & Upgrade

SERVICES TO INDUSTRY

- Mold / Die Design and Manufacturing
- Aluminum High Pressure Die Casting (Injection) products
- Plastic injection products
- Spare parts for rotating machines
- Machinery Design and Manufacturing (Mixers, Dozers, Conveyer belts, ..etc) for food and pharmaceutical
- Sheet Metal forming
- Surface Treatments and Powder Coating
- Journal Bearing Re-Babbiting

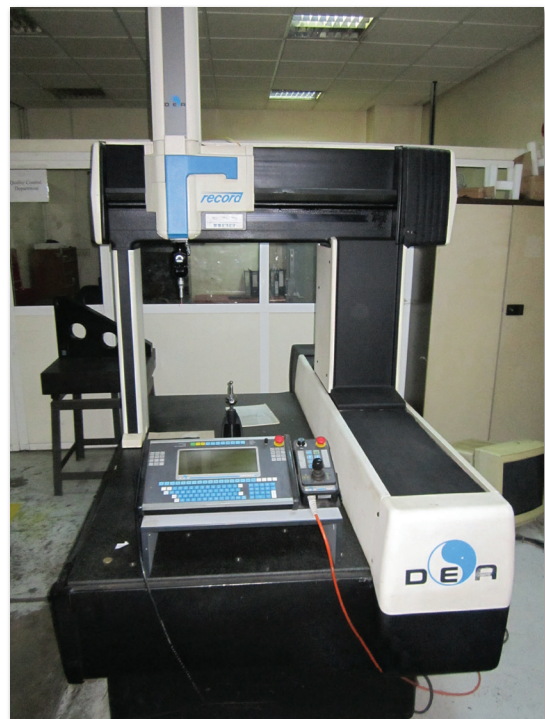
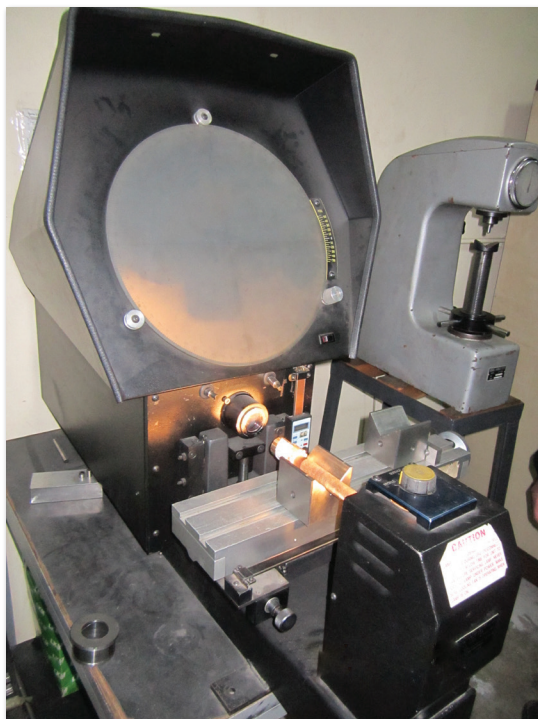


COMPREHENSIVE QUALITY

At **IRIS** the philosophy of quality control & assurance QA/QC stems from the belief that quality is..

“THE STEP TOWARDS SUSTAINABLE SUCCESS”

On one hand **IRIS** has a state -of-the art tool room, equipped with world class conventional and CNC techniques, highly qualified and experienced staff of engineering & technicians assure quality products and services are extended to clients.



EQUIPMENT

CNC MANUFACTURING CENTER



5 Axis CNC Boring/Horizontal Milling Center

Huge machine used for manufacturing parts with sizes up to 2 x 2 x 2 meters work piece (the largest machine available in Jordan with this size and capabilities).

4 Axis CNC Milling Machines

Several machines with different capabilities used for producing complex shapes that can't be produced with regular CNC milling machines, this production is done in high speed, accuracy, and quality.



EQUIPMENT

CNC MANUFACTURING CENTER



CNC Turning Lathe

Well known high speed CNC lathe machine are available in our facility with high dimensional accuracy in which are implemented in our product to serve needs of our customers.

CNC Gear Hopping machines

The latest CNC hobbing machine available in Jordan, this machine has the capability to produce gear up to 800 mm diameter and 500 mm height with high accuracy. We produce Spur, Helical, Spline Shafts and Bevel gears of different materials.



EQUIPMENT

CNC MANUFACTURING CENTER



5 Axis CNC Gear and Spline Shaft Grinding Machines

The only CNC gear grinding machine in Jordan, with its five axis capability of grinding various tooth-shaped (rectangular, involute.. etc.) spline flanks and the spline bottom cylindrical surface which has the centering requirement, suitable for automobile, tractor, machinery, and tooling manufacturing industry as well as repair workshops.

CNC Gear Shaving Machines

This machine is used to produce high surface finish for the gear teeth through shaving process Gear shaving may be used to improve the quality of meshing between two gears or between a gear and a rack, to reduce gear noise and wear.



EQUIPMENT

CNC MANUFACTURING CENTER



4 Axis CNC EDM Machine

This machine uses the electrical discharging process, with its 4 axis CNC capability it can be used to produce blind cavities, sharp corners, fine finishes, thin walls and cross sections, internal hexes and splines etc...

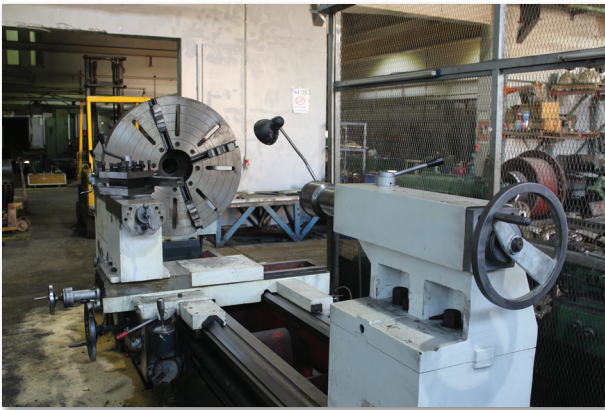
5 Axis Wire Cut Machine

As well as the EDM machine, the wire cutting machine uses the electrical discharging process to perform. This machine is capable of producing complex geometries, stacking plates, thin through profiles etc...



EQUIPMENT

TRADITIONAL METAL CUTTING MACHINES



Manual Lathes and Mills

Several regular milling and turning machines with wide range of dimensions to cover the needs during the production process for the purpose of satisfying our customers.

Boring Machine

Manual boring machine that can handle a work piece with the dimensions of 1.5 x 1.2 x 1 meter, this machine can be used for centering the bearing houses in several parts such as gear boxes or deferent types of mills, it can also be used for manufacturing deferent parts.



EQUIPMENT

TRADITIONAL METAL CUTTING MACHINES



Large Radial Drills

Drills are essential for manufacturing parts and machines, in Iris we have wide range of drills to cover the needs from small sort hole drilling to large long drilling.

Surface and Cylindrical Grinding Machines

The surface finish is one of the most important characteristics of machines and parts according to its applications, to ensure that our products are produced with the required surface finish IRIS has a wide range of grinding machines that diverse from surface to cylindrical grinding, internal or external grinding.



EQUIPMENT

TRADITIONAL METAL CUTTING MACHINES



Gear Shaping Machines

Gear shaper is a machine tool for cutting the teeth of internal or external gears. The cutting tool is also gear shaped having the same pitch as the gear to be cut. It is an accurate cutting process that produces a high surface finish on both external and internal teeth in which it can generate many gear types including spurs, involute splines, and helical gears.

HEAT TREATMENT

Our company owns the best technologies for heat treatment that allows providing a wide range of heat treatment services like surface and whole hardening and through hardening for wide range of metals.



EQUIPMENT

FIELD SERVICES INSTRUMENTS

For the sake of our commitment to stay ahead of the curve and to provide the best services, we use the latest instruments available in the areas of vibration, alignment, and balancing.

Hi-tech machines and equipment have become essential in modern tool making, by combining these with diversely experienced staff; a truly exceptional tools can be built.



EQUIPMENT

PLASTIC MACHINE



ALUMINUM INJECTION DEPARTMENT



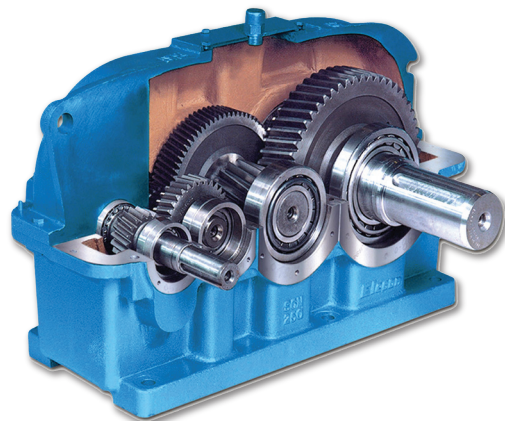
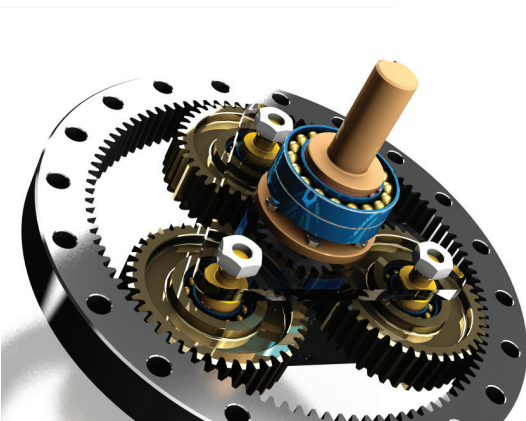
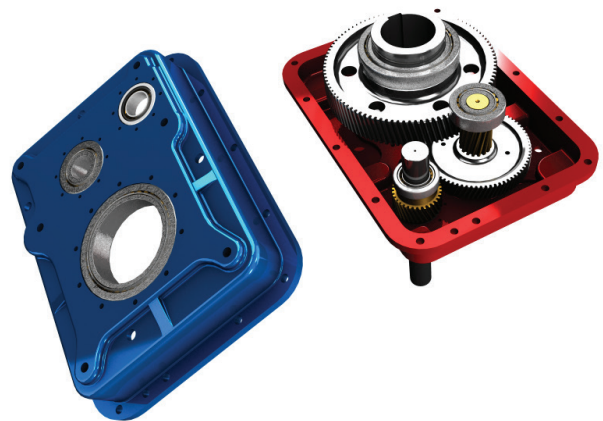
PRODUCTS

GEARBOXES

Complete gear box systems are manufactured completely in **IRIS** facility. Gearbox housing are manufactured by casting or fabrication. Gear wheels and spline shafts are manufactured, finished and heat treated as per AGMA standards. Gear box of any brand are completely overhauled and refurbished in IRIS Facility with extended warranty applied.

IRIS Gearbox manufacturing center is equipped with first class gear manufacturing machines and technological process that involves:

- . CNC Gear Hobbing and Shaping.
- . CNC Gear Grinding.
- . CNC Gear Shaving.
- . Gear Heat Treatment
- . Consistent Quality Control.



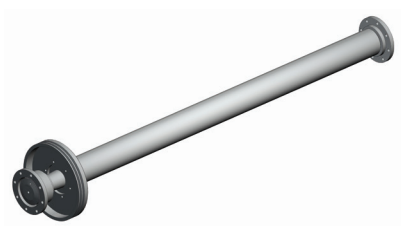
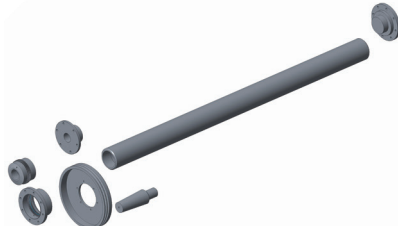
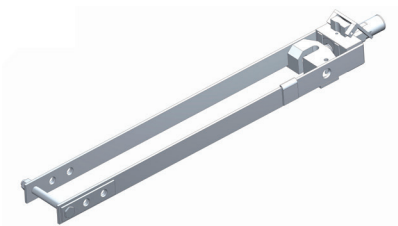
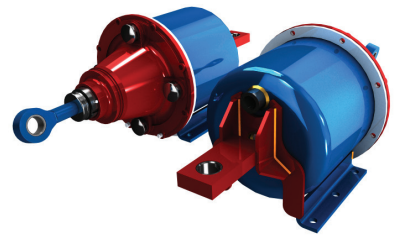
PRODUCTS

SPARE PARTS

IRIS Manufacturing serves the local locomotives owners by producing most of the needed spare parts. The high quality productions and reliability has made **IRIS** unique supplier for locomotive spare parts for Aqaba Rail Way corporation.

The parts and many, examples are:

- ✓ Air Brake Cylinders.
- ✓ Brake Pads.
- ✓ Brake beams.
- ✓ Cross anchors.
- ✓ Drive shafts.
- ✓ Gears.

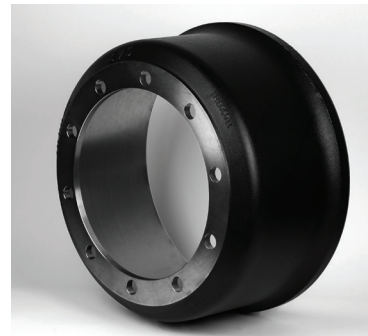


PRODUCTS

TRUCKS AND CONSTRUCTION MACHINERY PARTS

The high need for spare parts for truck and heavy machinery linked with **IRIS** capabilities has motivated IRIS to serve the local and regional markets by providing high quality spare parts. The list is comprehensive and contain the following:

1. Drums.
2. Brake disks.
3. Cardin shafts.
4. Power Take off PTO.
5. Hydraulic fittings.
6. Axles (Special & Standard).



PRODUCTS

HYDRAULIC AND PNEUMATIC SYSTEMS

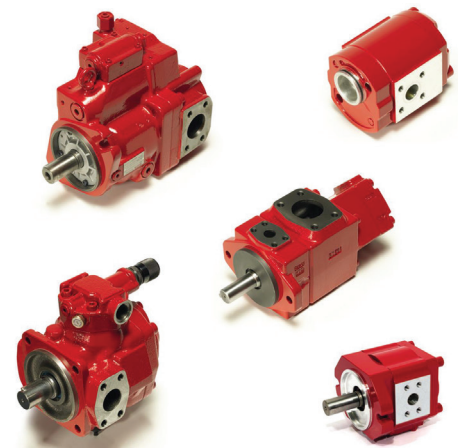
Based on its experience on the area of design and its precise manufacturing capabilities, **IRIS** started its hydraulic and pneumatic systems production line. The line covers number of products that are available to the market:

- GEAR PUMPS AND PTO

- External Gear pumps for industrial applications
- External Gear pumps for different tractor and loader applications including ACTROS, ISUZU, IVECO
- Internal Gear Pumps

- PISTON PUMPS

- Hydraulic Cylinders of different sizes
- Hydraulic Valves
- Pneumatic Actuators



PRODUCTS

PLASTIC PRODUCTS

- . Medical & Pharmaceutical
- . Industrial plastics
- . Food & Beverages
- . Detergent & Chemicals
- . Home plastics

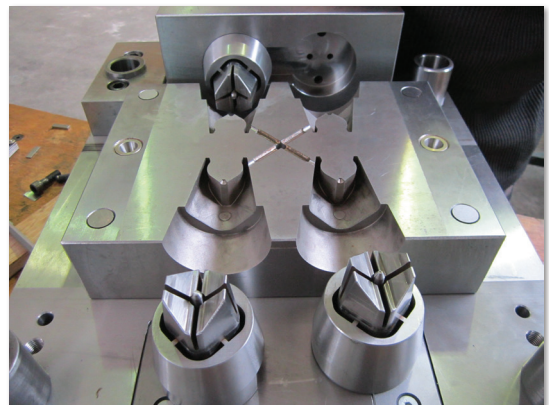
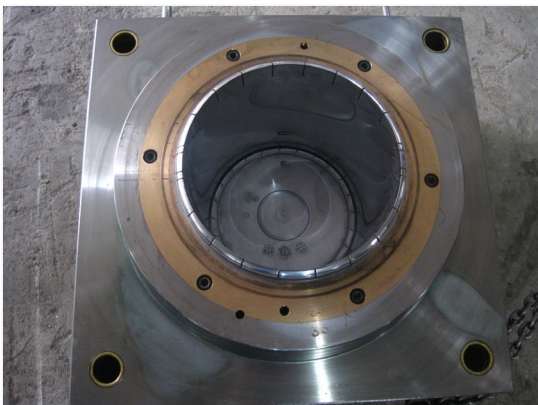
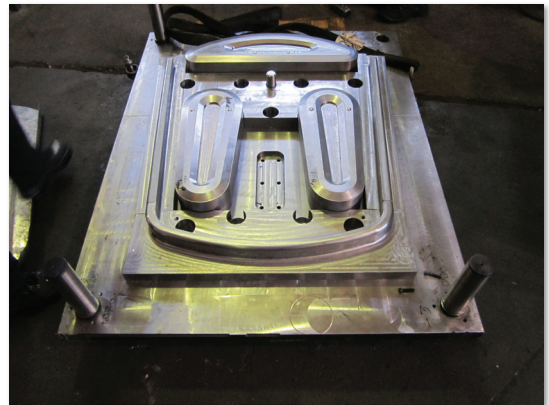
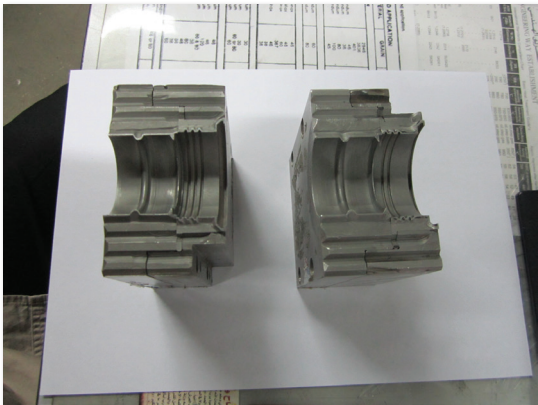


IRIS can convert your idea into actual plastic (Custom made plastics)

PRODUCTS

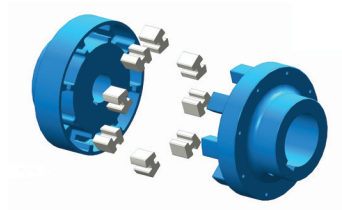
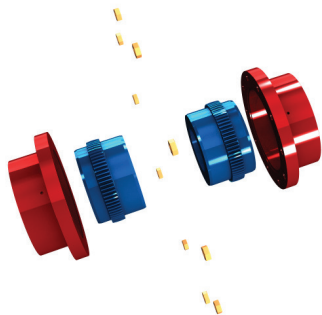
MOLDS & DIES

IRIS expertise in the field of manufacturing of molds goes back to more than 20 years. The range extends from plastic injection molds, blow molds to sheet metal cutting and forming molds. Complex multi-cavity moulds incorporating features such as de-threading mechanisms, slides pneumatics hydraulics & hot runner systems are designed and produced by **IRIS**.



PRODUCTS

COUPLINGS & GEAR COUPLINGS

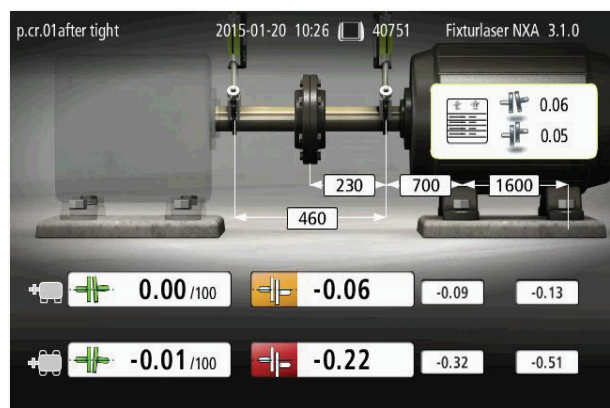
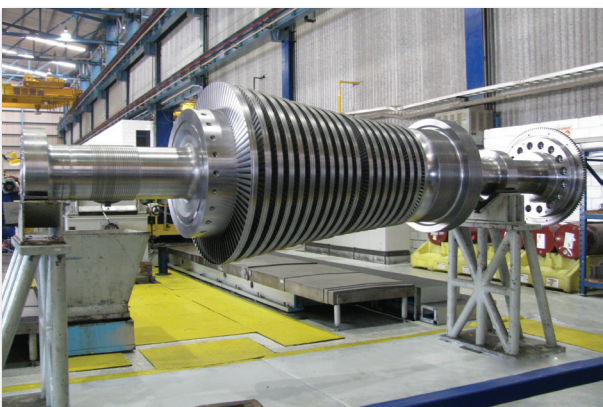


MAINTENANCE AND REPAIR SERVICES

IRIS manufacturing is equipped with first class experienced team and engineers for maintenance and repair services for process plants, production factories and all ranges of rotating machines including:

- Gearboxes, speed reducers, conveyor belts
- Gas turbines and Steam Turbines
- Generators,
- Screw and reciprocating compressors
- Water and oil and gas pumping units.
- Hydraulic and Pneumatic Systems

The team is capable of field problem diagnostics, dismantling, overhauling (manufacturing of spare parts), installation, startup and commissioning with extended warranty and follow up services. In addition to regular repair services IRIS can be involved in preventive and predictive maintenance programs as well as maintenance planning services.





Certificate CH19/0559

The management system of

IRIS Manufacturing Technology

Bldg. 375, King Abdullah II Industrial City, Sahab, Amman - Jordan

has been assessed and certified as meeting the requirements of



ISO 9001:2015

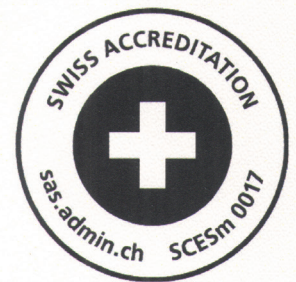
For the following activities

- 1- Develop, Design and Manufacture of LED Light Units, Machines, Spare Parts, Molds and Dies.
- 2- Repair of Mechanical Systems.

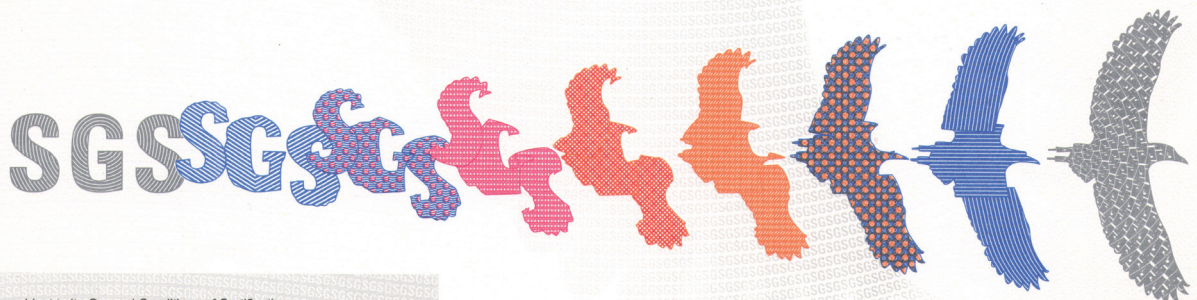
This certificate is valid from 14 June 2019 until 13 June 2022
 and remains valid subject to satisfactory surveillance audits
 Recertification audit due before 28 May 2022
 Issue 1. Certified since June 2019

Authorised by

SGS Société Générale de Surveillance SA
 Technoparkstrasse 1 8005 Zurich Switzerland
 t +41 (0)44 445-16-80 f +41 (0)44 445-16-88 www.sgs.com



Page 1 of 1



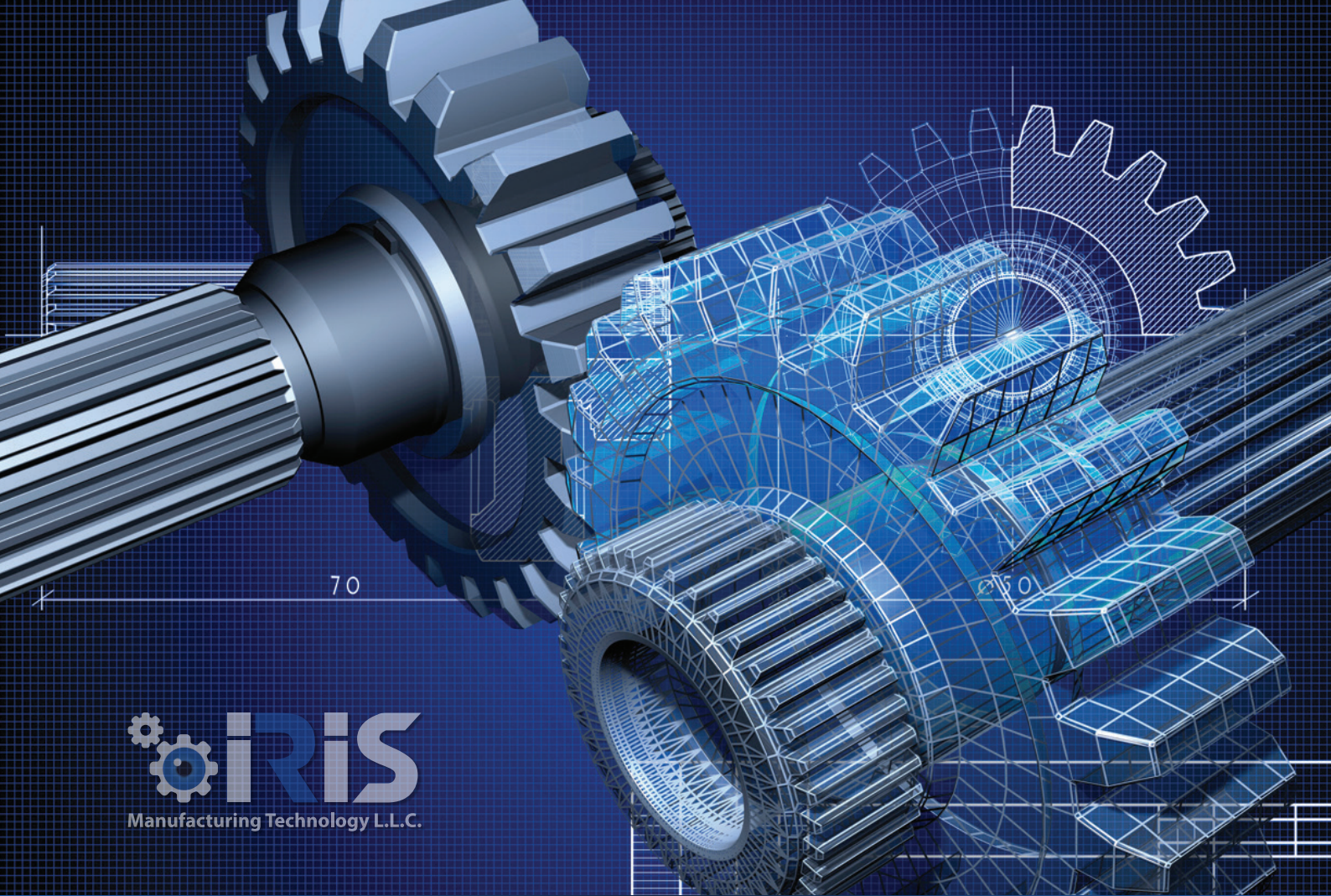
This document is issued by the Company subject to its General Conditions of Certification Services accessible at www.sgs.com/terms_and_conditions.htm. Attention is drawn to the limitations of liability, indemnification and jurisdictional issues established therein. The authenticity of this document may be verified at <http://www.sgs.com/en/certified-clients-and-products/certified-client-directory>. Any unauthorized alteration, forgery or falsification of the content or appearance of this document is unlawful and offenders may be prosecuted to the fullest extent of the law.



IRIS

Manufacturing Technology L.L.C.





Tel. +962 6 4022 537/8

Fax. +962 6 4022 541

contact@irisjo.com

irisjo.com